

OXITEC® 5000 ECONOMY Oxygen Analyser System



TÜV approved for
13. BImSchV and 17. BImSchV and TA-Luft

ENOTEC

Oxygen Analyser Package for Small to Medium Size Boilers

- High Quality
- Low Cost
- Simple Operation
- Easy Installation
- Factory Calibrated
- 24 Month Warranty

Technical Description

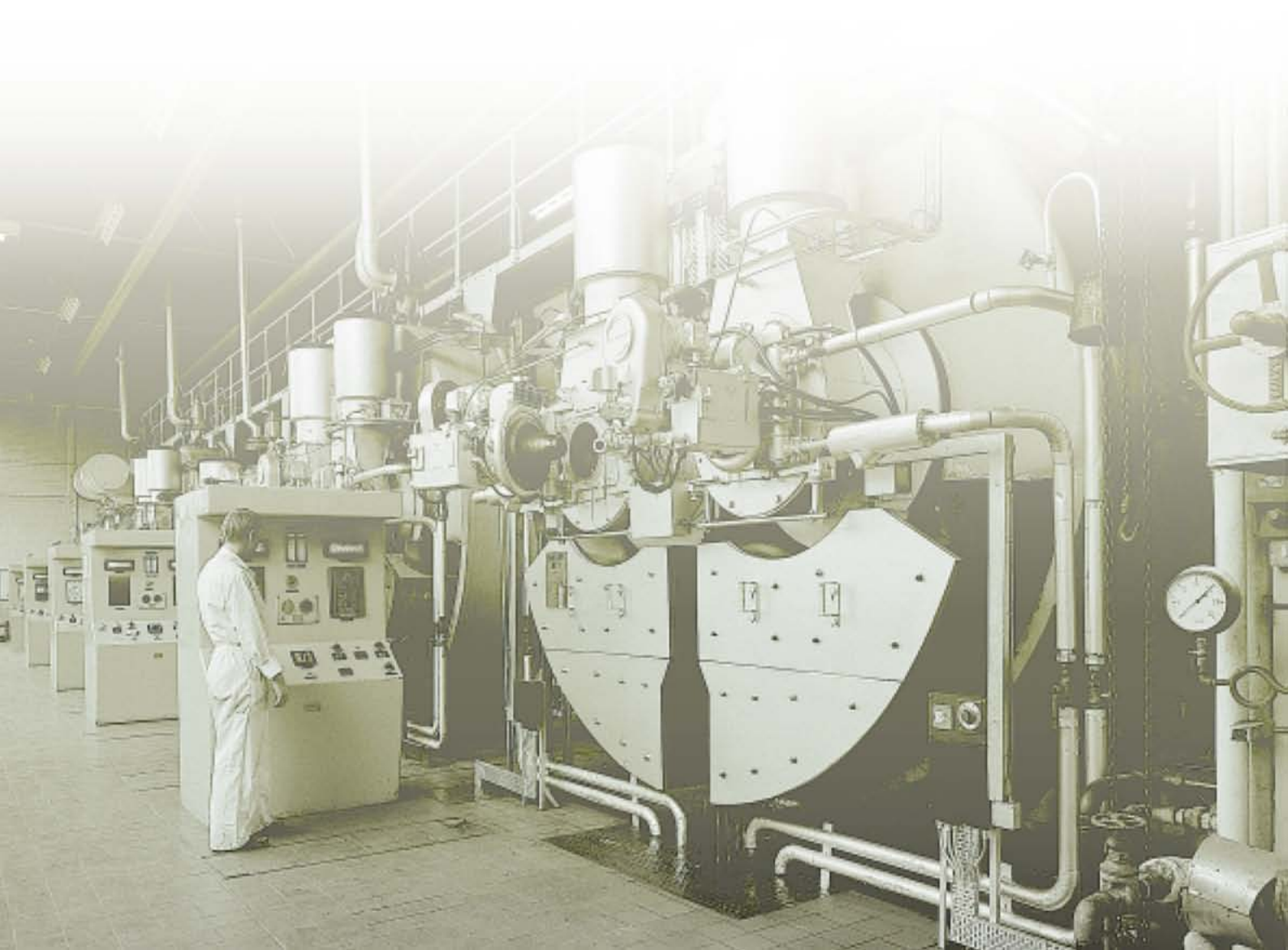
The OXITEC® 5000 ECONOMY oxygen analyser package comprises a probe, interconnecting cable and the microprocessor electronic unit and was developed for use in small to medium size boilers for commercial and industrial applications.

All components and materials used have been well proven from ENOTEC's many years experience in large boiler applications, such as in power stations, incinerator plants etc. resulting in long working life and low maintenance.

ENOTEC's gold brazing technology ensures a gas-tight sensor which with

its large cell surface area contributes to the increased O_2 measuring accuracy and fast response from the OXITEC® 5000 ECONOMY oxygen analyser package.

The microprocessor electronics is contained in a rugged sheet metal housing for direct mounting in the boiler house. The back lit graphic display (LCD) has clear text with keypad selectable language options, providing easy operation for end users in other countries. Installation time is reduced to a minimum with electrical cable connections simplified by use of quick disconnect plug & socket.



OXITEC® 5000 ECONOMY

High Quality that Doesn't Cost the Earth



Technical Data Probe

Measuring principle:	Zirconia oxide sensor
Max. flue gas temperature:	400 °C / 1400 °C (*with cooling tube)
Immersion length:	300, 500, 800 mm (400 °C version) 500, 1000 mm (1400 °C version)
Material:	ss 316 Ti/ss 304 (1.4571 /1.4301)
Flange:	Equal to DN 65 PN6
Flue gas velocity:	max. 25 m/sec
Pressure:	-50 mbar to +50 mbar relative
Response time:	0,5 sec @ 10 m/sec flue gas velocity
Electrical connection:	Quick disconnect plug & socket
Protection:	IP 65
Interconnecting cable:	6 m, 12 m, 18 m, 24 m, 30 m, other length on request

Technical Data Electronic

Construction:	Sheet steel housing with window
Dimensions:	400 mm x 300 mm x 225 mm
Protection:	IP65
Weight:	5 kg approx.
Supply voltage:	115 V or 230 V, 50/60 Hz
Power consumption:	100 - 200 VA (350 VA during start-up)
Series fused recommended:	10 A
Ambient temperature:	-10 °C to +45 °C
Immunity from disturbance:	according EMVG and low-voltage directive 72/73 EWG EN 50081-2: July 1993 EN 50082-2: March 1995
Measuring range:	0 to 99% freely adjustable
Output:	0/4 to 20 mA, potential free, 500 ohm max. load
Status signal:	System fault, Maintenance
Display:	LCD LED illuminates 240 x 64 points graphic display

* The OXITEC® 5000 Economy System can be used in some selected higher temperature applications to 1400 °C. The Economy System is intended and suitable for use in relative clean-gas applications only

Options	
Interface:	RS 232
O ₂ Alarms:	2 separate outputs; each programmable for High or Low O ₂ values

ENOTEC

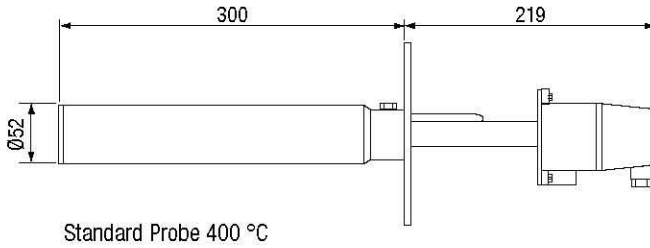
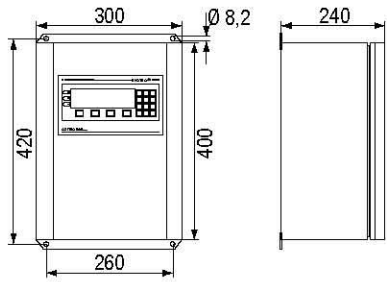




Dimensions of the electronic equipment and standard probe

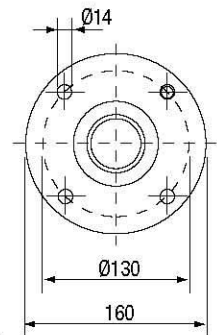
Sheet steel housing

Standard probe



Standard Probe 400 °C

Flange according to DN 65 PN 6

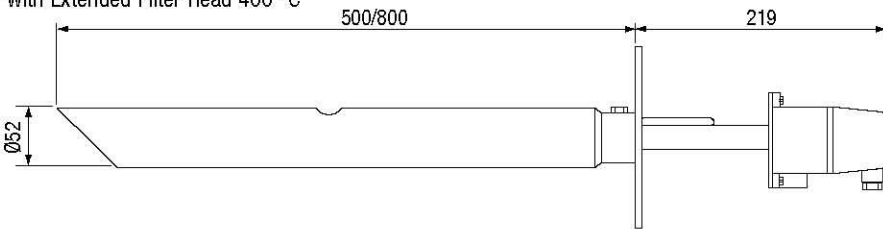


Dimensions of the probes

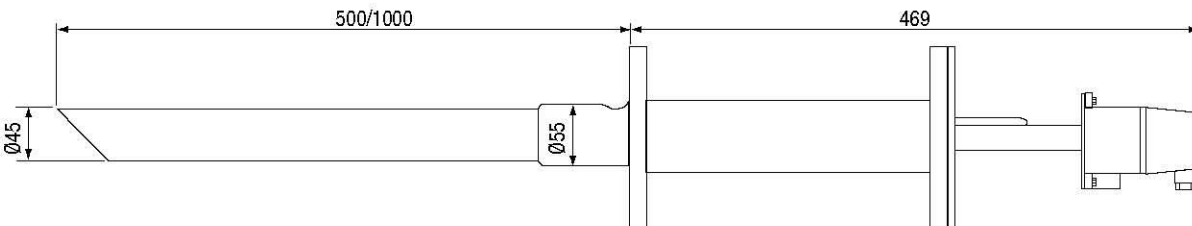
All dimensions in mm

ECONOMY probes

with Extended Filter Head 400 °C



with Cooling Tube 1400 °C



All dimensions in mm

Your local distributor

W I T H U S

대전광역시 대덕구 대화동 289-1

산업용재유통단지 11동 112호

TEL : 042)6 7 0 - 7 8 4 0

FAX : 042)6 7 0 - 7 8 4 8